

ASSEMBLY INSTRUCTIONS

■ WALL BRACKET MOD. "GIOTTO SG"

COD. 111000801 - 111000811

COD. 11100080VI - 11100081VI (STAINLESS STEEL BOLTS)



by

 **Tecnosystemi**
group

TECNOSYSTEMI S.p.A.

Via dell'Industria, 2/4 - Z.I. San Giacomo di Veglia 31029 Vittorio Veneto (Treviso)

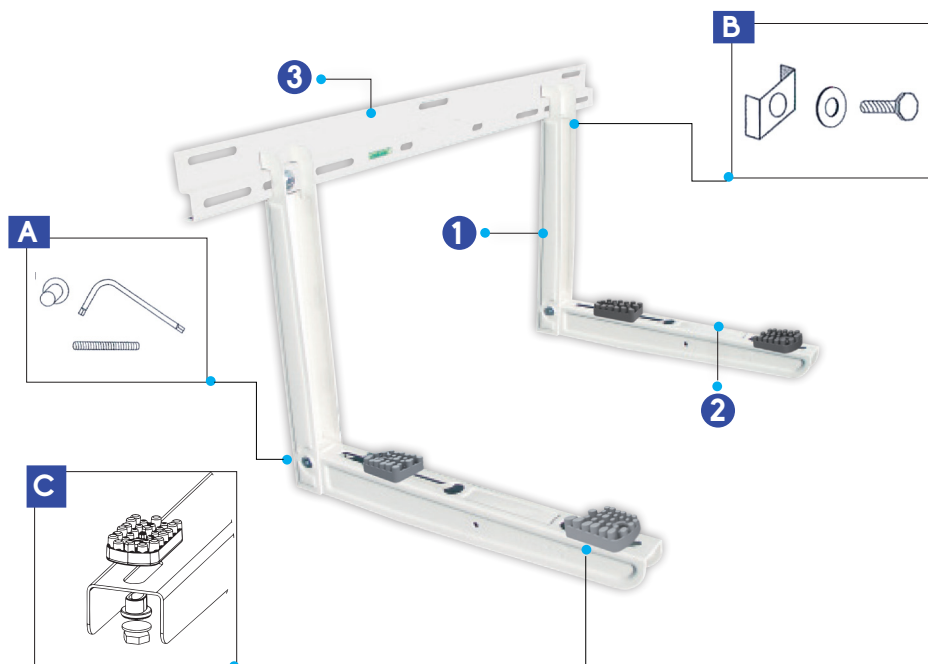
Tel/Phone +39043850044 Fax +39 0438 501516 - N.VERDE 800 904474

Email: info@tecnosystemi.com

WWW.TECNOSYSTEMI.COM

MOUNTING

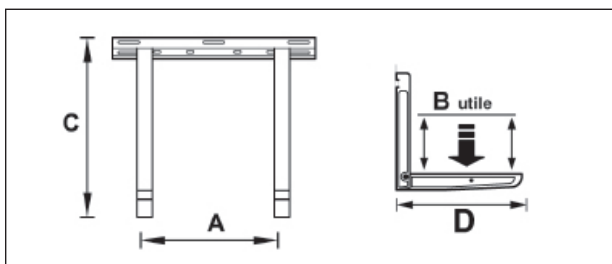
1. To fix the arm (1) to the bracket (2), use the supplied threaded bars and Allen inserts (A)
2. To fix the arm to the bar (3) use the supplied 8 x 35 bolts, plates and washers 8 x 24 (B)
3. Fix the "SOFT" anti-vibration mounts (C) in the fan part for max. of 60kg and "HARD" vibration dampers under the engine part for a max. of 120 kg



FEATURES

- ELECTRO-GALVANISED SHEET METAL
- BRACKET COMES PRE-ASSEMBLED
- FITTED WITH SPIRIT LEVEL
- ADJUSTABLE ARTICULATED REAR FEET
- EXTERIOR-GRADE POLYESTER POWDER COATING
- DESIGNED TO ACCOMMODATE TRAY
- ANTI-VIBRATION MOUNTS PROVIDED
- ANCHOR BOLTS
- DESIGNED TO ACCOMMODATE ELECTRIC HOIST

FEATURES



CODE	A mm	B mm	C mm	D mm
111000801	750	320	430	400
11100080VI	750	320	430	400
111000811	750	380	430	465
11100081VI	750	380	430	465

CODE	LOAD CAPACITY kg	TESTED TO kg
111000801	120	180
11100080VI	120	180
111000811	160	240
11100081VI	160	240

WARRANTY

The warranty is for 1 (one) year from the date of delivery and covers material defects, excluding parts not manufactured by the supplier. The warranty is not valid in case of defects caused by:

- incorrect transportation;
- negligent or improper use of the product or, in any case, not compliant with the specifications in the instructions and/or manuals for installation, use and maintenance;
- non-observance of product technical specifications
- repairs or modifications made by the customer or by third parties without prior written authorisation from the supplier
- lack of or unsuitable maintenance
- anything else not attributable to pre-existing material or production defects
- where the customer complaint is covered by the warranty and a claim is made within the time limit and in the manner requested by the supplier, the same supplier will undertake, at his own discretion, to replace or repair any product or product part showing signs of faults or defects
- the warranty does not cover damage and/or product defects deriving from faults caused by, or connected to, parts assembled/added by the customer or end-user.

DISPOSAL OF THE APPLIANCE

At the end of its useful life, the product must not be disposed of with household waste. It can be deposited at a dedicated recycling centre run by local councils, or at retailers who provide such a service. To highlight the requirement to dispose of household electrical items separately, there is a crossed-out waste paper basket symbol on the product.

